

Hong Kong International Airport Latest Development

From City Airport to Airport City



HKIA – International and Regional Aviation Hub

The Busiest Int'l Cargo Airport in the World

International Passenger: **3rd** In the World

2018/19

Passenger volume: Around 75 million
Air Cargo throughput: Over 5 million tonnes

More than **120** airlines connecting
about **200** destinations

Reaching Half of the World's Population
within 5 hours of Flying Time



Our Vision

- Grow HKIA position as the preeminent international aviation hub in Asia Pacific
- Transform HKIA into a new landmark for Hong Kong and GBA
- Become one of the key growth engines for Hong Kong and GBA economy



Three-runway System

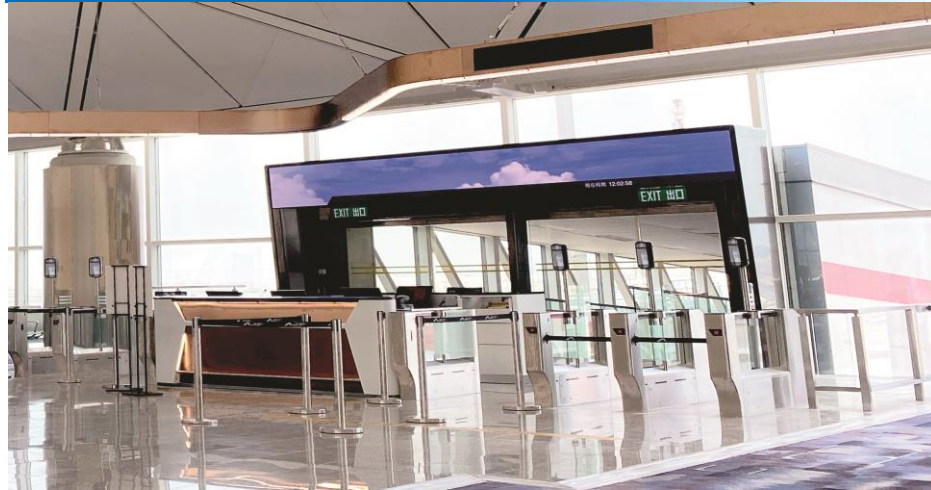


3RS Works Progress

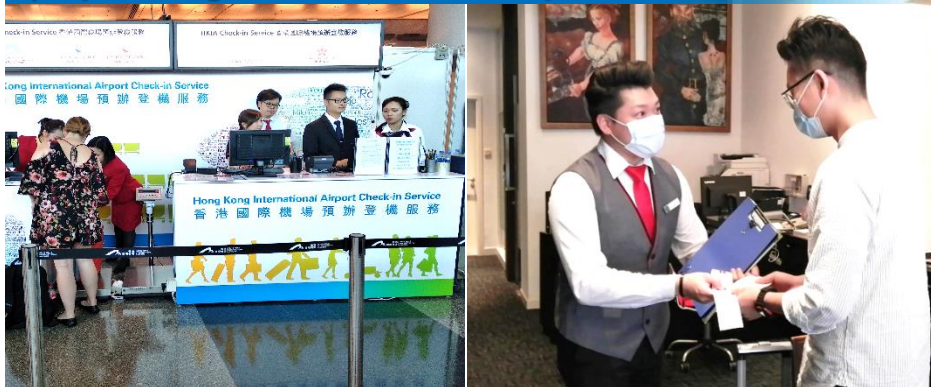


Smart Airport - Travel Experience Transformation

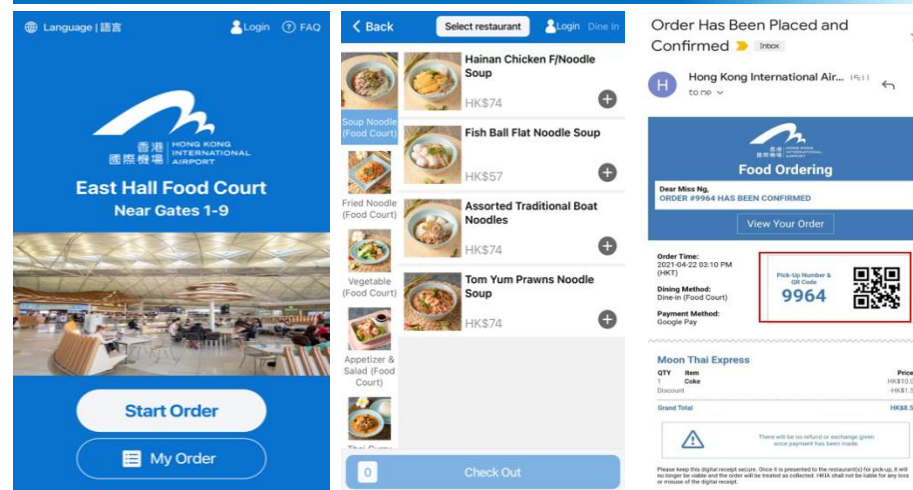
Biometrics and Touchless Technologies



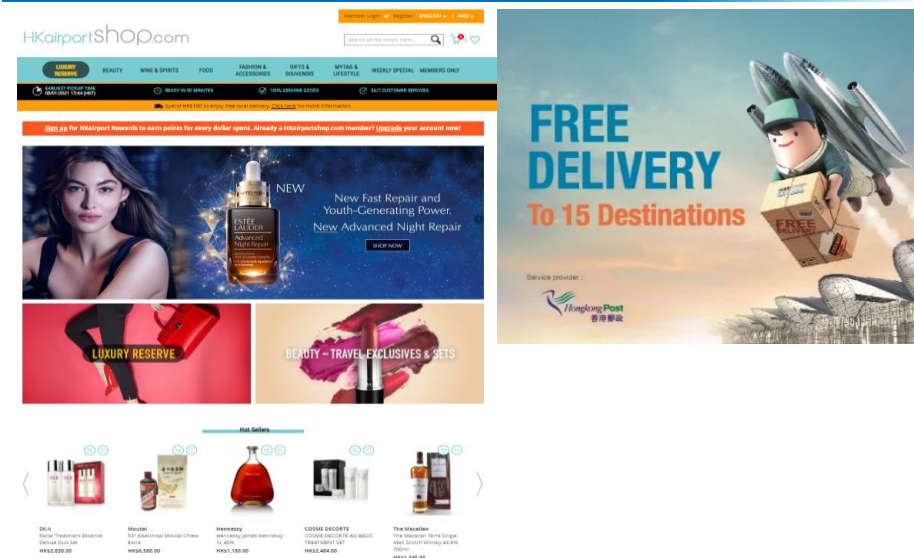
“Check-in Anywhere” and Baggage Pick-up (expanding services at off-airport locations)



HKIA Food Ordering Webpage



Online Shopping and Home Delivery



SKYCITY

SKYCITY
航天城

Terminal 1
一號客運大樓

Hotel
酒店

Terminal 2
二號客運大樓

AsiaWorld-Expo Phase 2
亞洲國際博覽館二期

11 SKIES

Hotel
酒店

AsiaWorld-Expo
亞洲國際博覽館

Future Hotel Development
未來酒店發展項目

Hotel
酒店

SKYCITY | 11 SKIES



11 SKIES

Hong Kong's
Largest RDE Destination
Total GFA
3.8M Sq. Ft. (opening in phases from 2022 to 2025)



Comprehensive Retail Complex

Over
800 Shops
From high street to ultra-luxury



Culinary Wonderland



Over
120 Dining Concepts

From street food to fine dining



Hong Kong's Largest Indoor Entertainment Hub

Experiential
Experience
For all ages



The First KidZania in
Greater China

Hong Kong's Largest Indoor Entertainment Hub

**Experiential
Experience**

For all ages

Flying Theatre
First Attraction featuring such
technology in Hong Kong



Hong Kong's Largest Indoor Entertainment Hub

**Experiential
Experience**
For all ages

SkyTrack
The Longest Indoor-
Outdoor Karting Track



Tower 3

Tower 1

Tower 2

Business Ecosystem

Three Grade A Office Towers

Tower 1

Tower 2

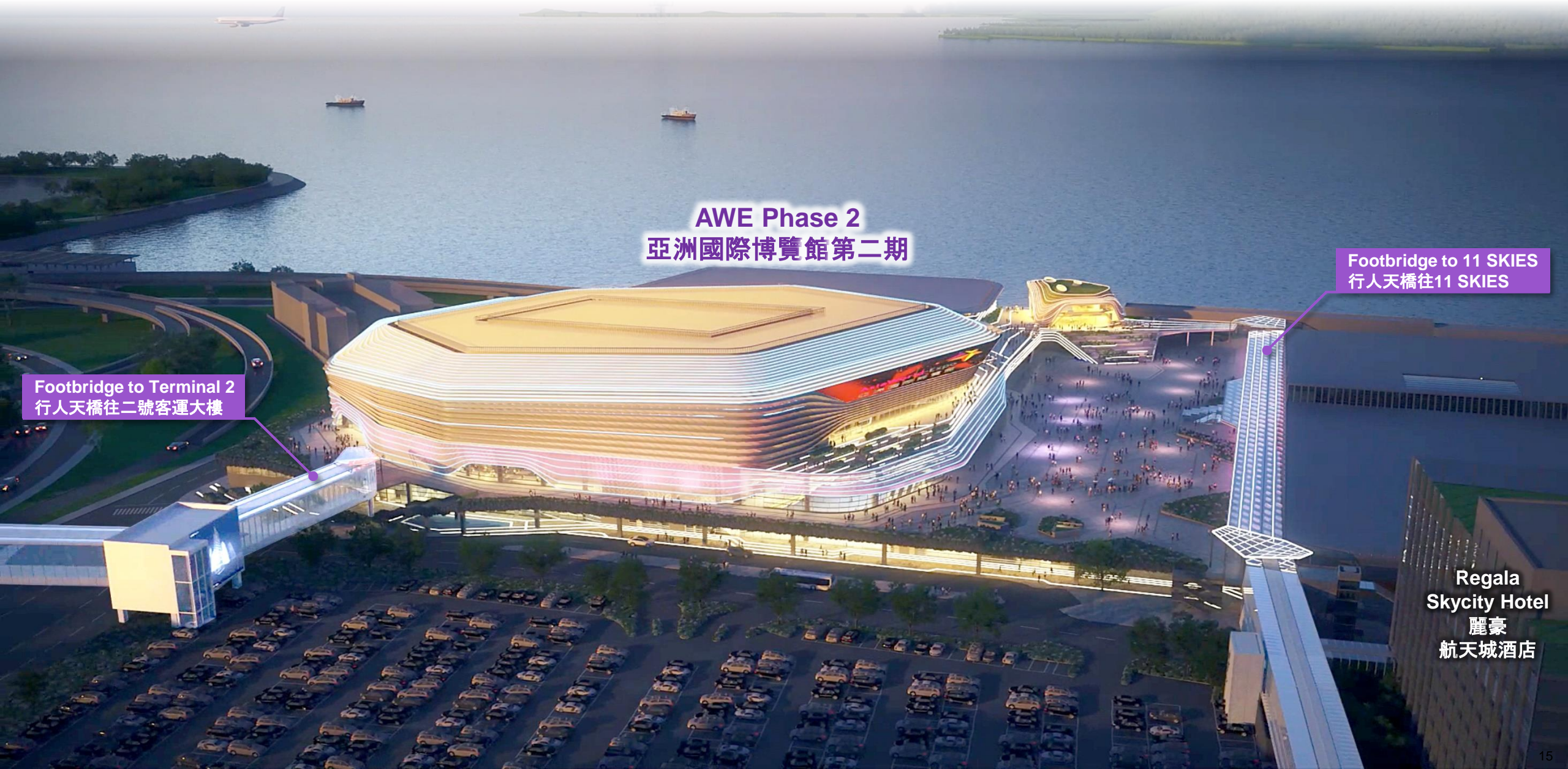
Tower 3

GBA Hub

Medical and Wellness

Wealth Management

SKYCITY AsiaWorld-Expo Phase 2



AWE Phase 2
亞洲國際博覽館第二期

Footbridge to Terminal 2
行人天橋往二號客運大樓

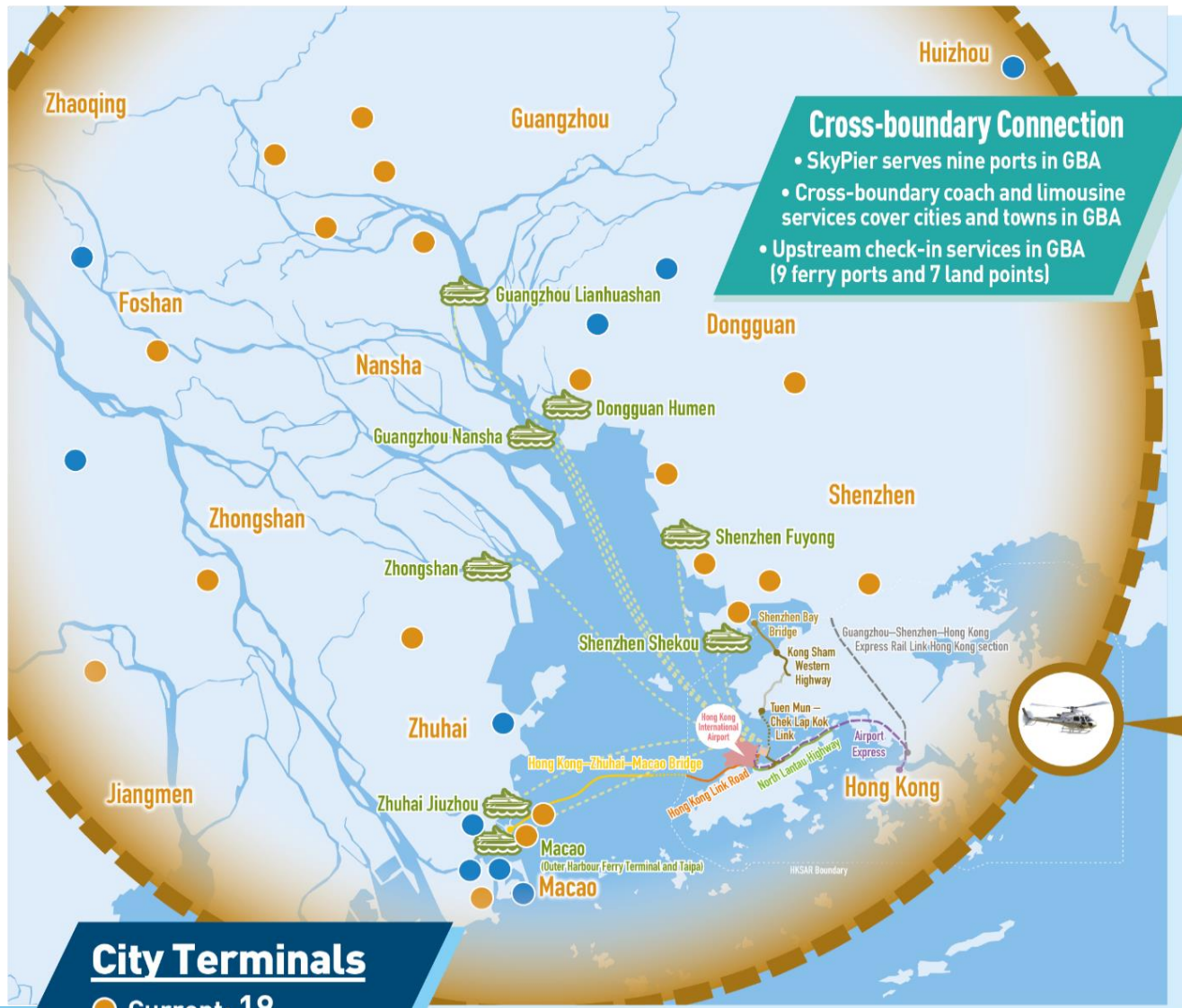
Footbridge to 11 SKIES
行人天橋往11 SKIES

Regala
Skycity Hotel
麗豪
航天城酒店

SKYCITY | Airport City Cove



Entrench HKIA's Leadership in GBA Market



HKIA Cross-boundary Sea and Land Transport Passenger Throughput (2019)

SkyPier Passenger Throughput



Cross-boundary Coach and Limousine Passenger Throughput

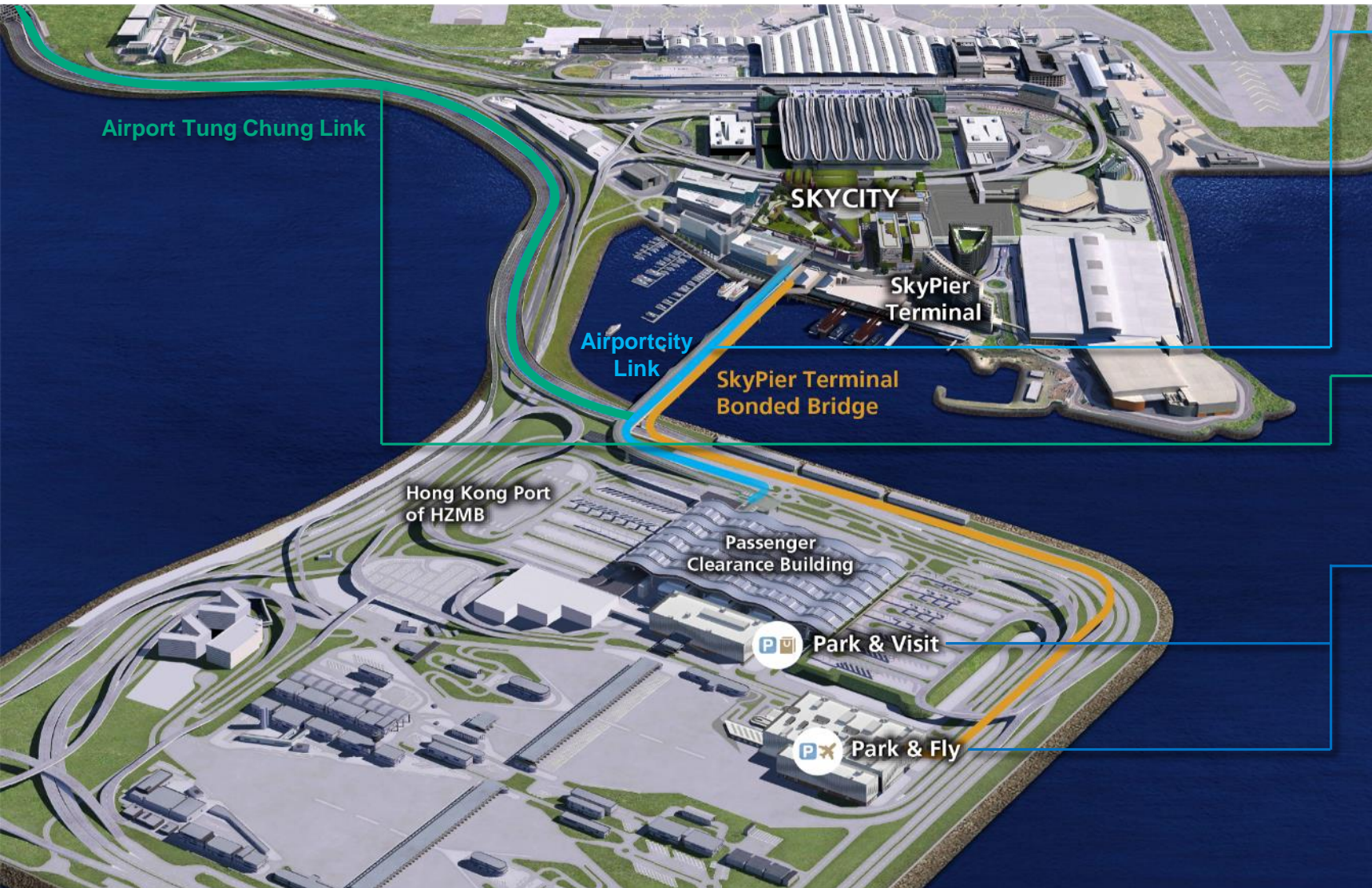


Strengthen Helicopter Services at GBA



GBA Connectivity

Autonomous Transportation System



Airportcity Link – complete by 2024



Airport Tung Chung Link



Automated Car Parks

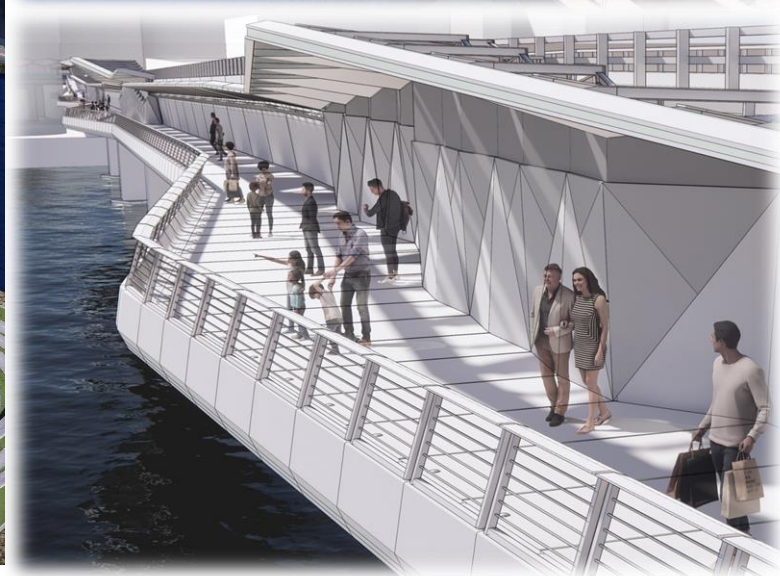
Park and Visit (2024)



Park and Fly (2023)

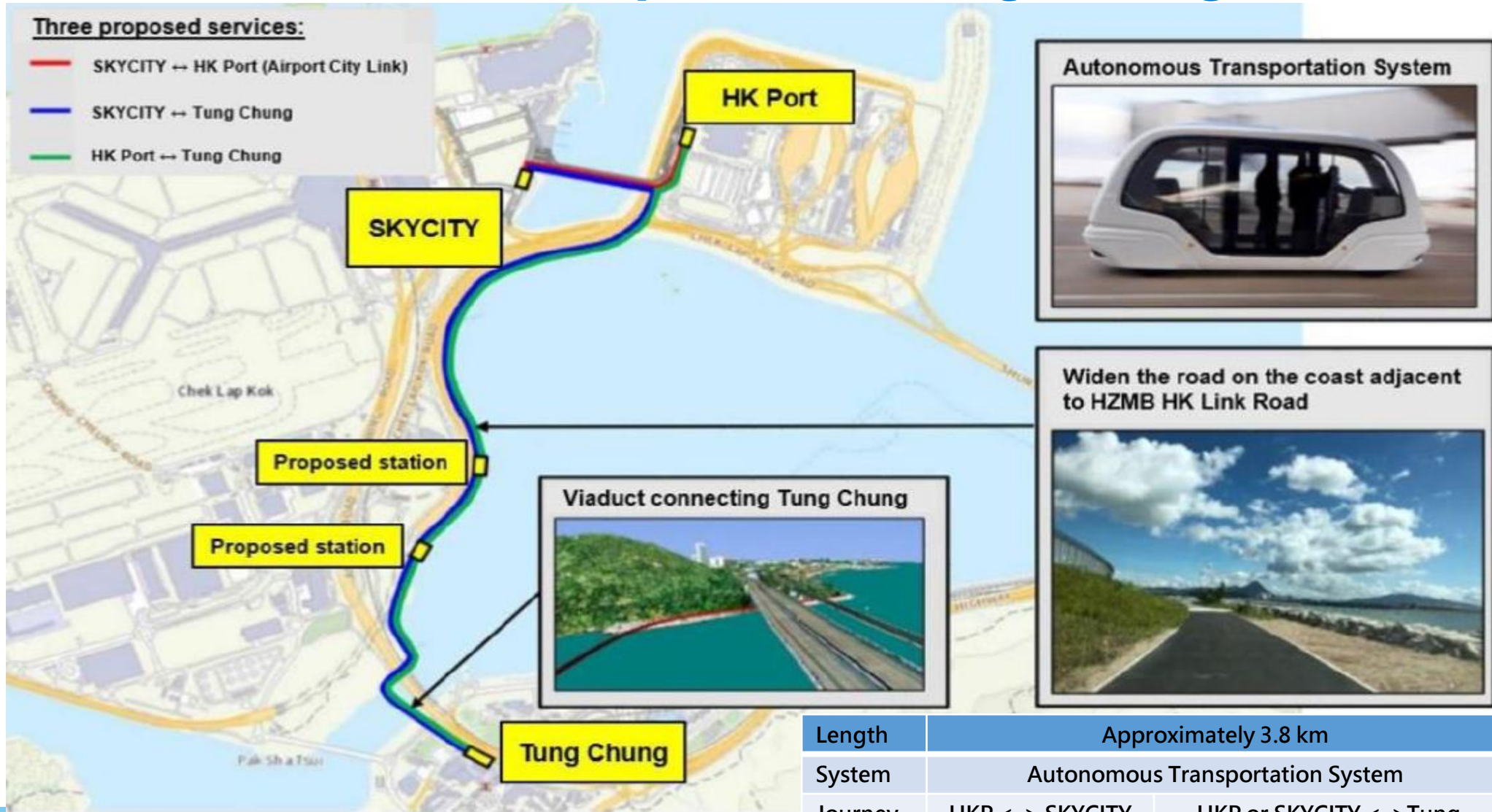


Airportcity Link



Airport Autonomous Transportation System

Link to connect the Airport and Tung Chung Town Centre



Length	Approximately 3.8 km	
System	Autonomous Transportation System	
Journey Time	HKP <-> SKYCITY	HKP or SKYCITY <-> Tung Chung town centre
	2 - 3 mins	8 - 10 mins



Thank you

